

The XMM deep survey in the CDF-S

I. Georgantopoulos, A. Comastri, C. Vignali, P. Ranalli, E. Rovilos, K. Iwasawa, R. Gilli, N. Cappelluti, F. Carrera, J. Fritz, et al.

► **To cite this version:**

I. Georgantopoulos, A. Comastri, C. Vignali, P. Ranalli, E. Rovilos, et al.. The XMM deep survey in the CDF-S. Astronomy and Astrophysics - A

A, EDP Sciences, 2013, 555, pp.A43. 10.1051/0004-6361/201220828 . cea-01135402

HAL Id: cea-01135402

<https://hal-cea.archives-ouvertes.fr/cea-01135402>

Submitted on 25 Mar 2015

HAL is a multi-disciplinary open access archive for the deposit and dissemination of scientific research documents, whether they are published or not. The documents may come from teaching and research institutions in France or abroad, or from public or private research centers.

L'archive ouverte pluridisciplinaire **HAL**, est destinée au dépôt et à la diffusion de documents scientifiques de niveau recherche, publiés ou non, émanant des établissements d'enseignement et de recherche français ou étrangers, des laboratoires publics ou privés.

The XMM deep survey in the CDF-S

IV. Compton-thick AGN candidates

I. Georgantopoulos^{1,2}, A. Comastri¹, C. Vignali^{3,1}, P. Ranalli^{2,1}, E. Rovilos^{1,4}, K. Iwasawa⁵, R. Gilli¹, N. Cappelluti¹, F. Carrera⁶, J. Fritz⁷, M. Brusa^{3,1,10}, D. Elbaz⁸, R. J. Mullaney⁸, N. Castello-Mor⁶, X. Barcons⁶, P. Tozzi⁹, I. Balestra¹⁰, and S. Falocco⁶

¹ INAF – Osservatorio Astronomico di Bologna, via Ranzani 1, 40127 Bologna, Italy

e-mail: ioannis.georgantopoulos@oabo.inaf.it

² Institute of Astronomy & Astrophysics, National Observatory of Athens, Palaia Penteli, 15236 Athens, Greece

³ Physics & Astronomy Department, University of Bologna, Viale Berti Pichat 6/2, 40127 Bologna, Italy

⁴ Physics Department, University of Durham, South Road, Durham, DH1 7RH, UK

⁵ ICREA and Institut de Ciències del COSMOS (ICC), Universitat de Barcelona (IEEC-UB), Martí i Franquès 1, 08028 Barcelona, Spain

⁶ Instituto de Fisica de Cantabria (CSIC-Universidad de Cantabria), 39005 Santander, Spain

⁷ INAF – Osservatorio Astronomico di Padova, Vicolo dell’Osservatorio 5, 35122 Padova, Italy

⁸ Irfu/Service Astrophysique, CEA-Saclay, Orme des Merisiers, 91191 Gif-sur-Yvette Cedex, France

⁹ INAF Osservatorio Astronomico di Trieste, via G.B. Tiepolo 11, 34143 Trieste, Italy

¹⁰ Max Planck für Extraterrestrische Physik, Karl Schwarzschild strasse, 85748 Garching, Germany

Received 30 November 2012 / Accepted 21 March 2013

ABSTRACT

The *Chandra* Deep Field is the region of the sky with the highest concentration of X-ray data available: 4 Ms of *Chandra* and 3 Ms of *XMM-Newton* data, allowing excellent quality spectra to be extracted even for faint sources. We took advantage of this to compile a sample of heavily obscured active galactic nuclei (AGN) using X-ray spectroscopy. We selected our sample among the 176 brightest *XMM-Newton* sources, searching for either flat X-ray spectra ($\Gamma < 1.4$ at the 90% confidence level) suggestive of a reflection dominated continuum or an absorption turn-over suggestive of a column density higher than $\approx 10^{24}$ cm⁻². We found a sample of nine heavily-obscured sources satisfying the above criteria. Four of these show statistically significant FeK α lines with large equivalent widths (three out of four have equivalent widths consistent with 1 keV) suggesting that these are the most certain Compton-thick AGN candidates. Two of these sources are transmission dominated while the other two are most probably reflection dominated Compton-thick AGN. Although this sample of four sources is by no means statistically complete, it represents the best example of Compton-thick sources found at moderate-to-high redshift with three sources at $z = 1.2$ – 1.5 and one source at $z = 3.7$. Using *Spitzer* and *Herschel* observations, we estimate with good accuracy the X-ray to mid-IR (12 μ m) luminosity ratio of our sources. These are well below the average AGN relation, independently suggesting that these four sources are heavily obscured.

Key words. X-rays: diffuse background – infrared: galaxies – galaxies: active – X-rays: galaxies

1. Introduction

The nature of the X-ray background (XRB) has been contentious since its discovery 50 years ago (Giacconi et al. 1962). The *Chandra* mission confirmed that the background is made up of the summed emission from active galactic nuclei (AGN; Brandt & Hasinger 2005). The resolved fraction of the XRB is about $\sim 90\%$ in the 0.5–2 keV and 2–5 keV bands (Alexander et al. 2003; Xue et al. 2011). Optical spectroscopic follow-up observations show that the peak of the redshift distribution of these sources is at $z \sim 0.7$ – 1 (Barger et al. 2003; Silverman et al. 2010). At higher energies, the limited sensitivity hampers the resolution of a large fraction of the XRB. Narrow energy-band source stacking shows that this fraction reduces to $\sim 60\%$ over 5–8 keV, and only $\sim 50\%$ above 8 keV (Worsley et al. 2005, 2006; Xue et al. 2012; Moretti et al. 2012).

Still, it is at high energies where the bulk of the XRB energy density is produced. The peak of the X-ray background at 20–30 keV (e.g. Frontera et al. 2007; Churazov et al. 2007; Moretti et al. 2009) can be reproduced only by invoking a

significant number of heavily obscured and Compton-thick AGN. Compton-thick AGN are those where the absorbing column densities exceed 1.5×10^{24} cm⁻² and thus the attenuation of X-rays by photoelectric absorption is enhanced by the scattering on electrons (for reviews on Compton-thick AGN properties and surveys see Comastri 2004; Georgantopoulos 2012). However, the exact density of heavily obscured AGN required by X-ray background synthesis models is still under dispute (Gilli et al. 2007; Sazonov et al. 2008; Treister et al. 2009a; Ballantyne et al. 2011; Akylas et al. 2012). In particular, the intrinsic fraction of Compton-thick AGN may vary from 15 to over 35% (see discussion in Akylas et al. 2012). Additional evidence of a numerous Compton-thick population comes from the directly measured space density of black holes in the local Universe (see Soltan 1982). It is found that this space density is a factor of 1.5–2 higher than predicted by the X-ray luminosity function (Marconi et al. 2004; Merloni & Heinz 2008), although the exact number depends on the assumed efficiency in the conversion of gravitational energy to radiation.

The advent of the INTEGRAL and *Swift* missions helped to constrain the Compton-thick population in the local Universe. These missions explored the X-ray sky at energies above 10 keV probably providing the most unbiased samples of Compton-thick AGN over the whole sky. Owing to the limited imaging capabilities of these missions (carrying coded-mask detectors), the flux limit probed is bright ($f_{15-55 \text{ keV}} \sim 10^{-11} \text{ erg cm}^{-2} \text{ s}^{-1}$), allowing only the detection of AGN at very low redshifts. These ultra-hard surveys did not detect large numbers of Compton-thick sources (e.g. Ajello et al. 2008; Tueller et al. 2008; Paltani et al. 2008; Winter et al. 2009; Burlon et al. 2011; Malizia et al. 2012; Goulding et al. 2011). The fraction of Compton-thick AGN in these surveys does not exceed a few percent of the total AGN population. In contrast, optical and mid-IR surveys yield Compton-thick AGN fractions of between 10% and 20% (Akylas & Georgantopoulos 2009; Brightman & Nandra 2011). However, even the ultra-hard surveys may miss a fraction of Compton-thick AGN, i.e. those with $N_{\text{H}} > 2 \times 10^{24} \text{ cm}^{-2}$. As Burlon et al. (2011) point out, this may explain the relative scarcity of Compton-thick AGN found in the ultra-hard INTEGRAL and *Swift* surveys.

At higher redshifts, a number of efforts have been made to identify Compton-thick AGN. For example, Gilli et al. (2010) provide samples of Compton-thick AGN at moderate redshifts ($z \sim 1$) using optical spectroscopy and in particular the [NeV] emission line. Searches for high-redshift Compton-thick AGN in the mid-IR also attracted much interest, mainly because the absorbed radiation heats the surrounding material and is re-emitted at IR wavelengths. The techniques that have been employed include the detection of a high $24 \mu\text{m}$ emission relative to the optical emission (e.g. Fiore et al. 2008, 2009; Georgantopoulos et al. 2008; Treister et al. 2009b; Eckart et al. 2010), and the presence of a low X-ray-to-mid-IR luminosity ratio (see Alexander et al. 2008, 2011; Georgantopoulos et al. 2011b). Most recently, Georgantopoulos et al. (2011a) proposed the presence of deep silicate features in mid-IR *Spitzer* spectra, although Goulding et al. (2012) argue that the silicate absorption in these sources is related to the host galaxies. Nevertheless, the most unambiguous method for finding Compton-thick sources relies on X-ray spectroscopy. In X-ray wavelengths, the most systematic attempts include these by Tozzi et al. (2006); Georgantopoulos et al. (2007, 2009), and more recently Brightman & Ueda (2012) all in the *Chandra* deep fields. A number of Compton-thick sources have been individually discussed in Norman et al. (2002), Iwasawa et al. (2005), Comastri et al. (2011), Feruglio et al. (2011), Gilli et al. (2011), Georgantopoulos et al. (2011b), and Iwasawa et al. (2012a). In particular, Comastri et al. (2011) has provided the most direct X-ray spectroscopic evidence yet for the presence of Compton-thick nuclei at high redshift, reliably identifying two Compton-thick AGN at $z = 1.536$ and $z = 3.700$.

Here, we attempt to find unambiguous examples of Compton-thick AGN at moderate redshifts, extending the work of Comastri et al. (2011). The *Chandra* Deep Field South (CDF-S) is one of the regions of the sky with the largest accumulation of multi-wavelength data available. In particular, it is the area with the most sensitive X-ray observations, namely 3 Ms of *XMM-Newton* data and 4 Ms of *Chandra* data, allowing the extraction of good quality X-ray spectra even for faint X-ray sources such as heavily obscured AGN. Owing to the superior *XMM-Newton* photon collecting power, we first select a sample of heavily obscured AGN using the 3 Ms *XMM-Newton* observations. For these sources, we present a combined *XMM-Newton* and *Chandra* spectral analysis to increase the photon statistics. Our aim is to detect unambiguous

signs of Compton-thick obscuration, such as direct detection of a large column density, or a flat spectral index, and finally a large equivalent-width (hereafter EW) Fe $K\alpha$ line. Finally, we examine the mid-IR and far-IR (up to rest-frame wavelengths of $160 \mu\text{m}$) properties of our sources using data from the *Spitzer* and *Herschel* missions. The aim is to check whether the IR observations independently support a heavy obscuration scenario. We adopt $H_0 = 75 \text{ km s}^{-1} \text{ Mpc}^{-1}$, $\Omega_{\text{M}} = 0.3$, and $\Omega_{\Lambda} = 0.7$ throughout the paper.

2. Data

2.1. X-ray

2.1.1. XMM-Newton

The CDF-S area was surveyed with *XMM-Newton* during different epochs spread over almost nine years. The data presented in this paper were obtained by combining the observations awarded to our project and observed between July 2008 and March 2010 (Comastri et al. 2011) with the archival data acquired in the period July 2001–January 2002. The total exposure time, after the removal of background flares, is ≈ 2.82 Ms for the two MOS and ≈ 2.45 Ms for the PN detectors. The total area covered is 30×35 arcmin. The source catalogue contains 339 X-ray sources detected in the 2–10 keV band with a significance larger than 5σ and a flux density limit of $\approx 6.6 \times 10^{-16} \text{ erg cm}^{-2} \text{ s}^{-1}$ assuming $\Gamma = 1.7$. A supplementary list of 74 sources detected with lesser significance is also provided. An extended and detailed description of the full data set, including data analysis and reduction and the X-ray catalogue, will be published in Ranalli et al. (2013).

2.1.2. Chandra

The CDF-S 4 Ms observations consist of 53 pointings obtained in the years 2000 (1 Ms), 2007 (1 Ms), and 2010 (2 Ms). The analysis of the first 1 Ms data is presented in Giacconi et al. (2002) and Alexander et al. (2003), while the analysis of the 23 observations obtained up to 2007 is presented in Luo et al. (2008). In the present 4 Ms survey, 740 sources are detected down to a sensitivity limit of $\sim 0.7 \times 10^{-16} \text{ erg cm}^{-2} \text{ s}^{-1}$ and $1 \times 10^{-17} \text{ erg cm}^{-2} \text{ s}^{-1}$ in the hard (2–8 keV) and soft (0.5–2 keV) band, respectively (Xue et al. 2011). The Galactic column density towards the CDF-S is $0.9 \times 10^{20} \text{ cm}^{-2}$ (Dickey & Lockman 1990).

2.2. Infrared

2.2.1. Spitzer

The central regions of the CDF-S were observed in the mid-IR by the *Spitzer* mission as part of the Great Observatories Origins Deep Survey (GOODS). These observations cover areas of about 10×16.5 arcmin² using the IRAC (3.6, 4.5, 5.8, and $8.0 \mu\text{m}$) bands. These data are combined with more recent observations of the wider E-CDF-S area in the SIMPLE survey (Damen et al. 2011). The combined data-set has a 5σ magnitude limit of $[3.6 \mu\text{m}] \text{ AB} = 23.86$, while the 3σ magnitude limit of the central GOODS region is $[3.6 \mu\text{m}] \text{ AB} = 26.15$. The GOODS area in the centre of the CDF-S has also been imaged with the

MIPS detector onboard *Spitzer* in the 24 μm band with a 5σ flux density limit of 30 μJy . A much wider area, including the entire E-CDF-S was imaged as part of the FIDEL legacy program (Magnelli et al. 2009) with a 5σ flux density limit of 70 μJy ; we use a combination of the two data-sets for this work.

2.2.2. *Herschel*

The far-Infrared data in this work come from the GOODS-Herschel survey of Elbaz et al. (2010). This is the deepest survey of *Herschel* using the PACS instrument in both the 100 and the 160 μm bands, with an integration time of more than 15 h per position. The area covered is a 13×11 arcmin field inside the GOODS area. The source detection is performed using a 24 μm prior position and the 3σ flux density limits are 0.8 and 2.4 mJy in the 100 and 160 μm bands respectively. The GOODS-Herschel catalogue we use also utilises public data from the HerMES survey (Oliver et al. 2012) in the CDF-S. We use a 250 μm catalogue based on 24 μm prior positions covering the GOODS-S area, and we keep sources with a flux density determination better than the 2σ limit of 3.5 mJy.

3. Sample definition and X-ray spectral extraction

3.1. The sample

We confine our analysis to the brightest sources in the preliminary *XMM-Newton* catalogue, i.e. those with a detection probability of 8σ . There are 194 sources from both the main and supplementary lists satisfying the above criterion. However, for a number of sources we cannot derive an *XMM-Newton* spectrum in any of the cameras, either because they are too faint (they lie in areas of elevated background or low exposure) or they are confused. The number of confused sources is determined using the *Chandra* imaging. Therefore, the number of extracted spectra is 176. We match the *XMM-Newton* positions with the *Chandra* positions using a radius of 5 arcsec, and find counterparts for all 176 sources in the 4 Ms catalogue of Xue et al. (2011) or the E-CDF-S catalogue of Lehmer et al. (2005).

We build the multi-wavelength catalogue using all the information available and the likelihood ratio method to select the counterparts, using the positional uncertainties provided in the various catalogues. We first combine the SIMPLE catalogue with both the K-selected (Taylor et al. 2009) and the BVR-selected (Gawiser et al. 2006) MUSYC catalogues (preferring K-selected sources where they are detected in both catalogues). We find the optical-infrared counterparts of the X-ray sources, constraining their positions, and then we look for counterparts in the FIDEL and 24 μm -prior *Herschel* catalogues.

Out of our 176 sources with *Chandra* counterparts, 136 have a spectroscopic redshift determination in Szokoly et al. (2004), Le Fèvre et al. (2005), Norris et al. (2006), Ravikumar et al. (2007), Vanzella et al. (2008), Treister et al. (2009a), Balestra et al. (2010), Silverman et al. (2010), and Cooper et al. (2012). For 38 of the remaining sources, photometric redshifts have been compiled from Cardamone et al. (2010), Taylor et al. (2009), Rafferty et al. (2011), Luo et al. (2010), and Dahlen et al. (2010), while two sources have no redshift determination because they are too faint in optical – near-Infrared wavelengths.

3.2. *XMM-Newton* spectra

For each individual *XMM-Newton* orbit, source counts were collected from circular regions with radii between 10 and 25 arcsec, depending on field crowdedness and source brightness, and centred on the 2–10 keV source positions. These radii correspond to encircled energy fractions of 59% and 86%, respectively considering the on-axis *XMM-Newton* PSF at an energy of 4.2 keV (the average energy of a source with a spectrum of $\Gamma = 1$). The encircled energy fraction does not change abruptly with the off-axis angle or the average energy. The above fractions become 55 and 80% at an off-axis angle of 9 arcmin and for an energy of 6 keV. Local background data were taken from nearby regions, separately for the PN, and MOS detectors to account for local background variations and chip gaps, and to avoid *XMM-Newton* or *Chandra* detected sources. The areas of the background regions have on average 20 arcsec radii. The spectral data from individual exposures were summed for the source and background, respectively, and a background subtraction was made assuming a common scaling factor for the source/background geometrical areas. Both the PN and the MOS spectra are extracted in the 0.5–8 keV energy area. The MOS-1 and MOS-2 spectra are summed separately using the FTOOLS *MATHPHA* task. Response and effective area files were computed by averaging the individual files using the FTOOLS *ADDRMF* and *ADDARF* tasks.

3.3. *Chandra* spectra

We used the SPEXTRACT script in the CIAO v4.2 software package to extract the spectra of *Chandra* sources. The extraction radius varies between 2 and 4 arcsec with increasing off-axis angle. At low off-axis angles (<4 arcmin), this area encircles 90% of the light at an energy of 1.5 keV. The same script extracts response and auxiliary files. The addition of the spectral files was performed with the FTOOLS task *MATHPHA*. To add the response and auxiliary files, we used the FTOOLS *ADDRMF*, and *ADDARF* tasks respectively, weighting according to the number of photons in each spectrum.

4. X-ray spectral fittings and selection method

The goal was to identify heavily obscured AGN via X-ray spectral analysis. We used the XSPEC v12.5 software package for the spectral fits (Arnaud 1996). We employed the C-statistic technique (Cash 1979), which had been specifically developed to extract spectral information from data of low signal-to-noise ratio. This statistic works on un-binned data, allowing us, in principle, to use the full spectral resolution of the instruments without degrading it by binning. We perform our initial selection in the *XMM-Newton* data both because of its high effective area at high energies as well as for its good counting statistics. We fit the *XMM-Newton* spectra using the absorbed power-law model PLCABS (Yaqoob 1997). The advantage of the PLCABS model is that it properly takes into account Compton scattering up to column densities of $N_{\text{H}} \sim 5 \times 10^{24} \text{ cm}^{-2}$.

Our selection method is summarised in the following criteria:

- 1) The detection of an absorption turnover corresponding to a column density of $N_{\text{H}} > 1.5 \times 10^{24} \text{ cm}^{-2}$. For a mildly Compton-thick source with a column density $\sim 10^{24} \text{ cm}^{-2}$, the absorption turnover occurs at rest-frame energies somewhat higher than ~ 8 keV. This implies that even with the

Table 1. Initial selection of Compton-thick candidates based on *XMM-Newton* absorbed power-law, (PLCABS), spectral fits.

PID	LID	XID	z	N_{H}	Γ	EW	c-stat	N_{H}	Flux	$L_{\text{X}}^{\text{obs}}$	$L_{\text{X}}^{\text{unobs}}$	Ref.
(1)	(2)	(3)	(4)	(5)	(6)	(7)	(8)	(9)	(10)	(11)	(12)	(13)
48	334	198	0.298 ¹	1.95 ^{+0.27} _{-0.19}	1.23 ^{+0.04} _{-0.09}	0.07 ^{+0.05} _{-0.05}	2909/2498	3.3 ^{+0.17} _{-0.14}	40.0	0.68	0.88	–
66	126	191	1.185 ²	12.3 ^{+45.0} _{-11.0}	-0.37 ^{+1.2} _{-0.6}	0.36 ^{+0.41} _{-0.31}	3015/2498	100 ^{+22.0} _{-20.0}	1.2	1.5	2.2	–
144	265	412	3.700 ²	105 ^{+78.0} _{-65.0}	2.5 ^{+1.3} _{-1.4}	0.40 ^{+1.80} _{-0.30}	2845/2498	67.0 ^{+27.0} _{-21.0}	1.55	3.7	40	(a), (c), (d), (e)
147	176	257	1.537 ²	18.6 ^{+7.2} _{-7.7}	0.43 ^{+0.59} _{-0.43}	0.51 ^{+0.30} _{-0.26}	2881/2498	61.0 ^{+9.0} _{-9.0}	6.3	2.2	3.5	(a), (b), (d)
214	55	83	2.00 ³	21.7 ^{+5.0} _{-7.1}	1.0 ^{+0.15} _{-0.25}	0.21 ^{+0.09} _{-0.09}	2874/2498	48 ^{+2.5} _{-4.0}	19	6.1	8.0	–
222	428	686	0.424 ²	0.30 ^{+0.37} _{-0.29}	0.77 ^{+0.24} _{-0.24}	<0.27	2896/2498	2.0 ^{+0.52} _{-0.41}	7.0	0.3	0.3	–
245	184	22	2.68 ³	45.0 ^{+25.0} _{-15.0}	0.93 ^{+0.38} _{-0.41}	<0.62	2820/2498	91.0 ^{+33.1} _{-22.6}	3.0	1.5	5.0	(e)
289	128	193	0.607 ²	0.56 ^{+0.42} _{-0.21}	0.82 ^{+0.15} _{-0.12}	0.11 ^{+0.10} _{-0.10}	2850/2498	3.2 ^{+0.4} _{-0.4}	15.9	1.2	1.4	–
324	398	634	1.222 ²	<0.63	0.69 ^{+0.30} _{-0.28}	0.71 ^{+0.58} _{-0.45}	2940/2498	6.0 ^{+6.8} _{-3.9}	3.6	1.2	1.2	(f)

Notes. The columns are: (1) *XMM-Newton* ID. (2) *Chandra* ID from Luo et al. (2008). (3) *Chandra* ID from Xue et al. (2011). (4) Redshift; two or three decimal digits denote X-ray or spectroscopic redshift, respectively; references: ⁽¹⁾ Balestra et al. (2010), ⁽²⁾ Szokoly et al. (2004), ⁽³⁾ X-ray redshift from current work. (5) N_{H} column density in units of 10^{22} cm^{-2} . (6) Photon index. (7) FeK α equivalent-width in units of keV; the energy of the line has been fixed at a rest-frame energy of 6.4 keV. (8) c-statistic value/degrees of freedom. (9) Column density in units of 10^{22} cm^{-2} , for a photon-index fixed at $\Gamma = 1.8$. (10) 2–10 keV flux in units of $10^{-15} \text{ erg cm}^{-2} \text{ s}^{-1}$. (11) 2–10 keV obscured luminosity in units of $10^{43} \text{ erg s}^{-1}$. (12) Unobscured luminosity (estimated by removing the absorption component) in units of $10^{43} \text{ erg s}^{-1}$. The flux and luminosities are derived leaving Γ free. (13) previous X-ray reference: (a) Tozzi et al. (2006); (b) Georgantopoulos et al. (2007); (c) Norman et al. (2002); (d) Comastri et al. (2011); (e) Iwasawa et al. (2012a); (f) Georgantopoulos et al. (2011b). All errors refer to the 90% confidence level.

relatively large effective area of *XMM-Newton* at high energies, it is difficult to detect the absorption turnover for marginally Compton-thick sources at low redshift. However, at higher redshifts the turnover shifts progressively to low energies making the identification of Compton-thick AGN more straightforward (Iwasawa et al. 2012b). For example, for a Compton-thick source with a column density of $N_{\text{H}} \sim 10^{24} \text{ cm}^{-2}$, the absorption turnover would shift to energies about 2 keV at a redshift of $z = 2$, an energy region where *XMM-Newton* has large effective area. At a column density of $5 \times 10^{24} \text{ cm}^{-2}$, the turnover occurs at an energy of about 20 keV (e.g. Yaqoob 1997). This criterion is reliable only in the case of sources with a spectroscopic redshift available because the rest-frame energy of the absorption turnover (and hence the exact value of the column density) requires knowledge of the redshift with high precision.

- 2) The detection of a flat spectral index $\Gamma < 1.4$ at a statistically significant level (90% confidence), i.e. the 90% upper limit of the photon index should not exceed $\Gamma = 1.4$. This is an arbitrarily selected, albeit extremely conservative, cutoff. The average photon index of AGN ranges between 1.7 and 2.0 with a standard deviation as low as 0.15 (e.g. Nandra & Pounds 1994; Dadina 2008; Brightman & Nandra 2011; Ricci et al. 2011; Burlon et al. 2011). Therefore, a flat spectrum may be characteristic of heavily obscured, reflection-dominated Compton-thick AGN (George & Fabian 1991; Matt et al. 2004). We note however, that because of spectral degeneracy, it is likely that some sources appear to have flat spectra simply because of moderate ($\sim 10^{22-23} \text{ cm}^{-2}$) absorption (see also Corral et al. 2011). This degeneracy is pronounced in sources with low signal-to-noise spectra.
- 3) For the sources which are selected according to the above two criteria, we examine whether the addition of a Gaussian component is required by the data. This additional criterion is motivated by the fact that strong FeK α lines are often observed in Compton-thick AGN in the local Universe (e.g. Fukazawa et al. 2011).

5. The Compton-thick candidates

5.1. *XMM-Newton* results

The *XMM-Newton* spectral fittings yield nine sources with either a flat spectrum¹ or a absorption turnover corresponding to a rest-frame column density greater than $N_{\text{H}} \approx 10^{24} \text{ cm}^{-2}$. The *XMM-Newton* spectral fits (PLCABS + GA in XSPEC notation) of these nine sources are given in Table 1. Eight, out of nine Compton-thick candidates, have a spectroscopic redshift available. One out of those (PID-245) has a noisy optical spectrum and a highly uncertain spectroscopic redshift (1.864) based on only one line (Balestra et al. 2010). For this source there are also three photometric redshifts available 2.28, 2.43 and 3.0, (Dahlen et al. 2010; Santini et al. 2009; Luo et al. 2010), respectively. However, it is possible that the X-ray source does not correspond to the counterpart with the available optical spectrum (located 1 arcsec away). Iwasawa et al. (2012b) detect an FeK α line which corresponds to a redshift of $z = 2.68$. We chose to use this redshift instead of the optical ones. At this X-ray redshift there is no obvious optical line

For source PID-214, for which there are only photometric redshifts available, $z = 1.5$ and $z = 1.17$ (Cardamone et al. 2010), there is a hint for a line at an energy of $E = 2.13^{+0.04}_{-0.03} \text{ keV}$ with $EW = 0.3 \pm 0.1 \text{ keV}$. On the basis of this line, assuming it is related to the FeK α at 6.4 keV rest-frame energy, the implied redshift would be $z = 2.00 \pm 0.05$. Hereafter, we adopt the X-ray redshift for this source.

At least one source (PID-144) at a spectroscopic redshift of $z = 3.70$ is a probable transmission dominated Compton-thick source, i.e. it is characterised as Compton-thick on the basis of an absorption turn-over in its X-ray spectrum. This source was first reported as Compton-thick by Norman et al. (2002). A

¹ In addition, there are two more sources which appear to have flat spectra, but instead the 90% upper limits of their photon indices are just above the chosen threshold of $\Gamma = 1.4$. These are sources PID-64 and PID-252 at a spectroscopic redshift of $z = 0.516$ and 1.893, respectively.

Table 2. Joint XMM and *Chandra* spectral fits of the full sample of Compton-thick candidates.

PID	Power-law			Reflection						
	cts	cts	z	N_{H}	Γ	EW	c-stat	Γ	EW	c-stat
(1)	(2)	(3)	(4)	(5)	(6)	(7)	(8)	(9)	(10)	(11)
48	7736	4172	0.298	$2.51^{+0.23}_{-0.17}$	$1.38^{+0.04}_{-0.09}$	$0.10^{+0.03}_{-0.03}$	3622/3010	$2.55^{+0.03}_{-0.03}$	<0.013	4078/3011
66	1044	215	1.185	$100^{+22.0}_{-19.0}$	1.8	$0.50^{+0.55}_{-0.28}$	3614/3010	1.8	$0.55^{+0.30}_{-0.30}$	3666/3012
144	848	407	3.700	$48.7^{+44.0}_{-27.0}$	$1.26^{+0.72}_{-0.47}$	$0.61^{+0.43}_{-0.33}$	3477/3010	$1.91^{+0.19}_{-0.14}$	$0.564^{+0.30}_{-0.30}$	3477/3011
147	1207	593	1.537	$18.6^{+5.2}_{-7.0}$	$0.46^{+0.45}_{-0.36}$	$0.43^{+0.20}_{-0.20}$	3485/3010	$1.43^{+0.10}_{-0.10}$	$0.38^{+0.20}_{-0.18}$	3487/3011
214	2921	1921	2.0	$19.8^{+4.8}_{-4.0}$	$0.87^{+0.15}_{-0.14}$	$0.30^{+0.10}_{-0.10}$	3498/3010	$1.82^{+0.05}_{-0.05}$	$0.30^{+0.05}_{-0.10}$	3582.5/3011
222	1694	1021	0.424	$1.8^{+0.40}_{-0.40}$	$1.51^{+0.19}_{-0.19}$	$0.12^{+0.12}_{-0.11}$	3477/3010	1.8	<0.15	3702/3012
245	460	259	2.68	$106.0^{+13.0}_{-30.0}$	$1.76^{+0.82}_{-0.82}$	<0.37	3388/3010	$1.53^{+0.10}_{-0.28}$	<0.44	3404/3011
289	3790	2295	0.607	$1.30^{+0.27}_{-0.25}$	$1.23^{+0.06}_{-0.12}$	$0.18^{+0.08}_{-0.08}$	3330/3010	1.8	<0.10	4263/3012
324	733	104	1.222	<0.60	$0.90^{+0.30}_{-0.22}$	$1.0^{+0.62}_{-0.54}$	3425/3010	1.8	$0.51^{+0.42}_{-0.35}$	3457/3012

Notes. The columns are: (1) *XMM-Newton* ID. (2) Net *XMM-Newton* counts (all three modules). (3) Net *Chandra* counts. (4) Redshift; two or three decimal digits denote photometric or spectroscopic redshift respectively. (5) N_{H} column density in units of 10^{22} cm^{-2} . (6) Photon index. (7) Equivalent-width in units of keV; the energy of the line has been fixed at a rest-frame energy of 6.4 keV. (8) c-statistic value/degrees of freedom. (9) Photon-index for the PEXRAV model. (10) Equivalent-width of the FeK α line in the PEXRAV model. The line energy is fixed to 6.4 keV. (11) c-statistic value/degrees of freedom. All errors refer to the 90% confidence level.

much higher quality X-ray spectrum of this source was reported in Comastri et al. (2011). The remaining sources present a flat spectral index which may be suggestive of a reflection continuum. The FeK α lines provide additional information on the nature of our sources. Four out of nine sources (PID-66, 144, 147, 324) present high rest-frame FeK α EW (see Table 1). These are suggestive of high absorbing column densities most likely corresponding to Compton-thick AGN.

5.2. Joint XMM-Newton/Chandra spectral fits

5.2.1. Power-law and Fe line model

To increase the photon statistics, we present the combined *XMM-Newton* and *Chandra* spectral fits. These are given in Table 2. We note that, there are about 70 *XMM-Newton* and *Chandra* observations spanning a period of more than ten years. Then, in principle one should use 70 different normalisations which is not feasible because of computational limitations. Therefore, for the sake of simplicity, the *XMM-Newton* and the *Chandra* power-law normalizations have been tied to the same value.

In agreement with the *XMM-Newton* spectral analysis, presented in the previous section, four sources (PID-66, 144, 147 and 324) present FeK α lines with high (rest-frame) EW (>0.4 keV). Therefore, the joint *Chandra* and *XMM-Newton* analysis corroborates that these four sources have a good probability for being Compton-thick. In Fig. 1 we present the joint *Chandra* and *XMM-Newton* PN spectral fits.

5.2.2. Reflection model

We fit a reflection model, Magdziarz & Zdziarski (1995) (PEXRAV + GA in XSPEC notation). The parameters in the PEXRAV model are the Fe abundance, the inclination angle of the reflecting slab, the cut-off energy of the incident power-law and finally the slope of the incident power-law. We found that the first three parameters remain practically unconstrained owing to the large

uncertainties. Therefore, we fix the Fe abundance to 1, and the inclination angle of to 45 degrees, while we assume that the incident power-law spectrum has no high energy cut-off (see e.g. Dadina 2008).

For four sources the derived photon index is either very flat (PID-66, $\Gamma = 0.80 \pm 0.2$) or very steep (PID-222, $\Gamma = 2.95 \pm 0.08$), (PID-289, $\Gamma = 2.90 \pm 0.06$), (PID-324, $\Gamma = 2.93^{+0.31}_{-0.36}$). As these values are many σ discrepant with the intrinsic spectral slopes encountered in AGN (see e.g. Nandra & Pounds 1994; Dadina 2008), we choose to fix the photon index to $\Gamma = 1.8$. The results are shown again in Table 2.

5.3. More complex spectral models for the four more probable Compton-thick AGN candidates

For the four more probable Compton-thick AGN candidates, we present some additional spectral models for the joint *XMM-Newton* and *Chandra* spectral fits. First, we are exploring the exact energy of the FeK α line. This choice is motivated by the results of Iwasawa et al. (2009) who find ionized Fe emission in many Ultra-luminous IRAS galaxies. Moreover, we investigate the effect of leaving the ratio between the *Chandra* and the *XMM-Newton* power-law normalization free. We keep the Fe line normalization constant, as this is believed to arise far away from the black hole in type-2 AGN (Shu et al. 2011). Therefore, the present model has two more free parameters, the line energy and the *Chandra* power-law normalization, which is not tied up to the *XMM-Newton* power-law normalization (Table 3). We note that the normalization of the *Chandra* and *XMM-Newton* power-laws are consistent within the errors (see discussion in Sect. 5.2.1)

A further model contains an additional power-law whose normalization has been set to 3% of the primary power-law. The slope of this power-law has been fixed to the same value as the primary (transmitted) power-law. This component models the scattered (unabsorbed) component along the line of sight which is often detected in type-2 AGN (e.g. Turner et al. 1997). In this model the energy of the FeK α line is left again as a

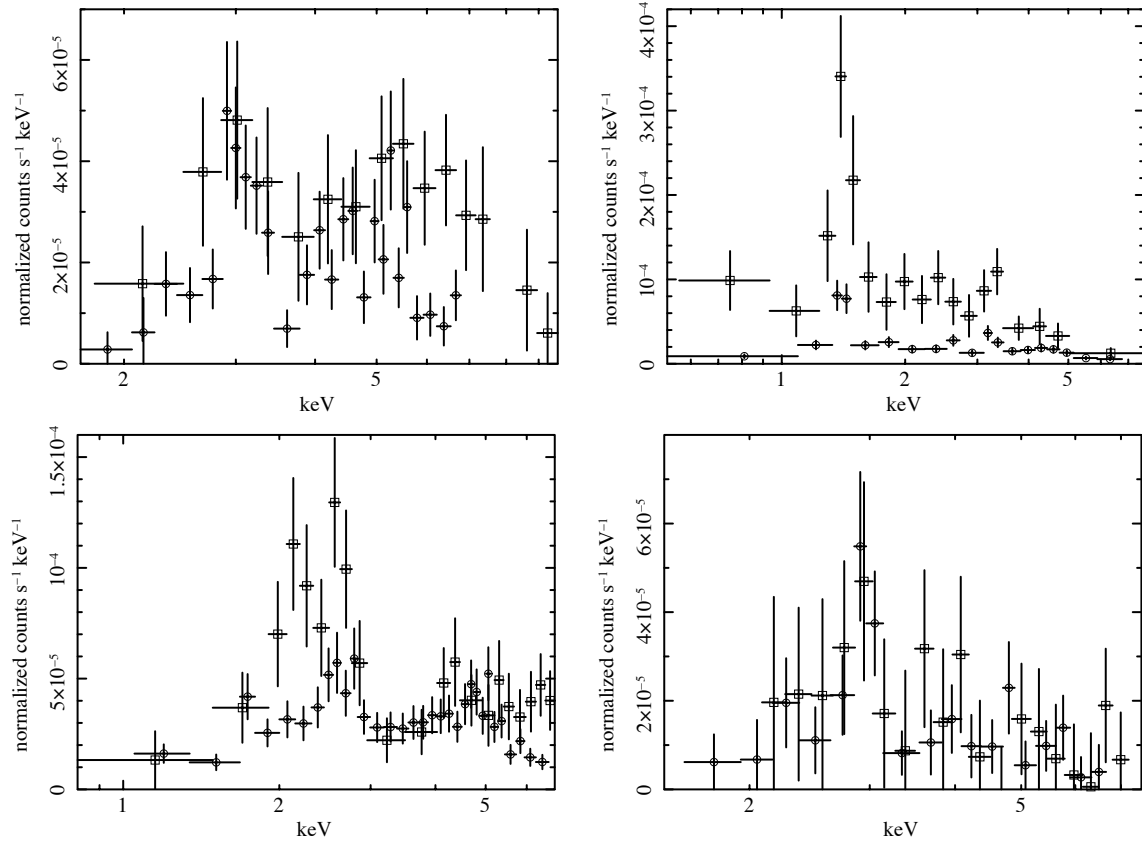


Fig. 1. X-ray *Chandra* (circles) and *XMM-Newton* PN (squares) X-ray spectra of the Compton-thick AGN candidates PID-66, PID-144 and PID-147 and PID-324. The first and second row give the transmission and reflection dominated AGN, respectively, according to the combined *Chandra* and *XMM-Newton* spectral fits. We note the high spectral response of *XMM-Newton* compared to *Chandra* at high energies.

Table 3. Joint *XMM-Newton* and *Chandra* spectral fits to the four more probable Compton-thick sources Power-law + FeK α line (PLCABS+GA) leaving the relative *XMM-Newton* and *Chandra* normalization and the energy of the line free.

PID	N_{H}	Γ	E	EW_{X}	EW_{C}	c
(1)	(2)	(3)	(4)	(5)	(6)	(7)
66	$78.0^{+4.0}_{-8.0}$	$1.52^{+0.03}_{-0.03}$	$6.45^{+0.25}_{-0.40}$	$0.23^{+0.30}_{-0.10}$	$0.37^{+0.10}_{-0.05}$	3560/3008
144	$80.0^{+7.5}_{-7.5}$	$1.79^{+0.10}_{-0.10}$	$6.49^{+0.46}_{-0.14}$	$0.47^{+0.30}_{-0.24}$	$0.56^{+0.44}_{-0.28}$	3475/3008
147	$20.0^{+4.0}_{-8.0}$	$0.57^{+0.33}_{-0.33}$	$6.40^{+0.13}_{-0.10}$	$0.35^{+0.20}_{-0.15}$	$0.43^{+0.23}_{-0.20}$	3477/3008
324	<0.45	$0.76^{+0.12}_{-0.14}$	$6.38^{+0.95}_{-0.95}$	$0.69^{+0.63}_{-0.42}$	$1.15^{+0.69}_{-1.00}$	3402/3008

Notes. The columns are: (1) *XMM-Newton* ID. (2) Column density (in units of 10^{22}). (3) Photon index as derived from the PLCABS model. (4) FeK α line energy. (5) *XMM-Newton* rest-frame EW of the FeK α line. (6) *Chandra* rest-frame EW of the FeK α line. (7) c -statistic value and degrees of freedom. Note: the model is the same as that used in Table 2 except here, the FeK α line energy is free and the *Chandra* and *XMM-Newton* power-law normalizations are not tied to each other.

free parameter. The same holds for the normalization of the *Chandra* power-law which is not tied to the *XMM-Newton* normalization. The results are presented in Table 4. The spectral fits are, in general, consistent with the simple power-law plus FeK α line fits. The exception is source 66 where the photon-index becomes flatter at the expense of a lower column density. In this case, because of the flatter power-law, the EW becomes higher reaching a value of 1 keV in the case of *Chandra*. In good agreement with the power-law model presented in Sect. 5.2.1, the four sources (PID-66, 144, 147 and 324) present FeK α line EW higher than ~ 0.4 keV corroborating their classification as probable Compton-thick candidates.

6. Co-added X-ray spectra

Although there are at least four sources with large FeK α line EW, it is possible that some of the remaining sources have large EW which fail detection owing to the limited photon statistics. In order to answer this question, we derive the co-added X-ray spectrum. The objective is to detect faint FeK α emission that cannot readily be detected in a single source (e.g. Iwasawa et al. 2012b). The data stacking is a straight sum of the rest-frame spectra of individual sources. The individual spectra are binned so that they have a 2–10 keV rest-frame energy range with 200 eV channel width. The data, after background subtraction,

Table 4. Joint *XMM-Newton* and *Chandra* spectral fits to the four more probable Compton-thick candidates, using a power-law + FeK α line + scattered emission model (PLCABS+GA+PO), leaving the relative *XMM-Newton* and *Chandra* normalization and the central energy of the line free.

PID	N_{H}	Γ	E	EW_{X}	EW_{C}	c
(1)	(2)	(3)	(4)	(5)	(6)	(7)
66	$28.3^{+6.1}_{-7.0}$	$0.16^{+0.04}_{-0.07}$	$6.45^{+0.28}_{-0.32}$	$0.41^{+0.25}_{-0.20}$	$0.99^{+0.60}_{-0.40}$	3551/3007
144	$135^{+18.0}_{-16.0}$	$2.2^{+0.24}_{-0.32}$	$6.5^{+0.15}_{-0.15}$	$0.65^{+0.40}_{-0.30}$	$0.70^{+0.40}_{-0.30}$	3458/3007
147	$8.0^{+6.0}_{-4.0}$	$1.00^{+0.38}_{-0.31}$	$6.57^{+0.30}_{-0.15}$	$0.28^{+0.28}_{-0.23}$	$0.30^{+0.30}_{-0.25}$	3490/3007
324	<0.42	$0.72^{+0.13}_{-0.16}$	$6.39^{+0.08}_{-0.08}$	$0.51^{+1.49}_{-0.25}$	$1.22^{+0.90}_{-0.70}$	3402/3007

Notes. The columns are: (1) *XMM-Newton* ID. (2) Column density (in units of 10^{22}). (3) Photon index as derived from the PLCABS model. (4) FeK α line energy. (5) *XMM-Newton* rest-frame EW of the FeK α line. (6) *Chandra* rest-frame EW of the FeK α line. (7) c -statistic value and degrees of freedom.

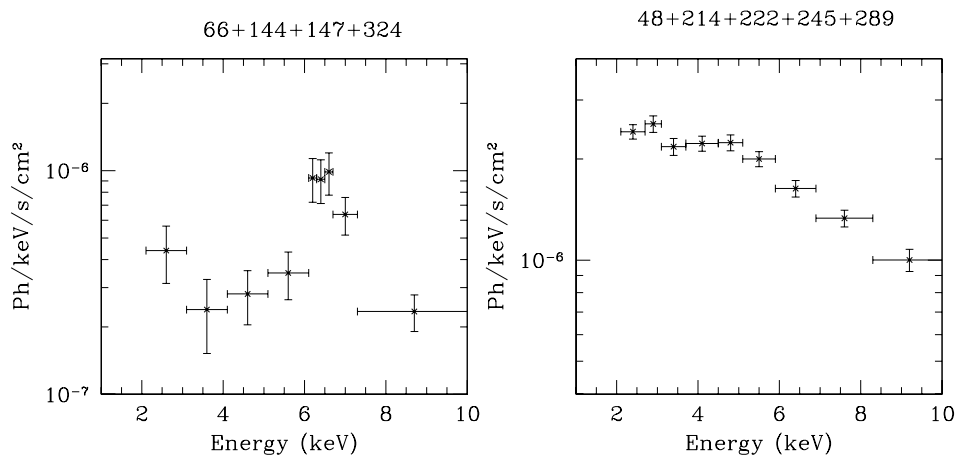


Fig. 2. Co-added (rest-frame) X-ray spectra for two sets of sources. *Left panel:* the four more probable Compton-thick AGN candidates (see text). *Right panel:* the remaining five sources.

are corrected for an efficiency curve determined by the response matrix and auxiliary response file. Finally, each energy bin is corrected for redshift.

In Fig. 2, we present the co-added rest-frame X-ray spectra for two groups of sources. The first group includes the four more probable Compton-thick AGN candidates (PID-66, 144, 147, and 324). The second group includes the remaining sources (PID-48, 214, 222, 245, and 289). A difficulty with the second group is that two of the redshifts (PID-214 and 245) are based on the X-ray spectra and so may be more ambiguous. The first group of sources displays a very prominent FeK α line at a rest-frame energy of 6.4 keV. The second group possibly shows an emission feature but at a higher energy of about 7 keV. If confirmed, this could imply the presence of an ionized FeK α line.

7. Infrared properties

7.1. Spectral energy distributions

We construct spectral energy distributions (SED) for the full sample of our flat spectrum sources, to constrain the predominant powering mechanism (AGN or star formation) in the mid/far IR part of the spectrum. The SEDs are also used to obtain an accurate estimate of the $12 \mu\text{m}$ nuclear infrared luminosities and thus the X-ray to mid-IR luminosity ratios which are often considered good diagnostics for heavily obscured sources.

We use data from UV wavelengths to the far-IR (where available). Four out of nine sources do not have a far-IR measurement available from *Herschel*. The data have been modelled using the code originally developed by Fritz et al. (2006). The code has been updated by Feltre et al. (2012). The SED fitting is based on a multicomponent analysis (e.g. Vignali et al. 2009; Hatziminaoglou et al. 2009; Pozzi et al. 2012). The observed UV to far-IR SED is de-composed into three distinct components: a) stars, having the bulk of the emission in the optical/near-IR b) hot dust, mainly heated by UV/optical emission caused by gas accreting onto the supermassive black hole c) colder dust heated by star formation. The stellar component has been included using a set of simple stellar population (SSP) spectra of solar metallicity and ages ranging from ≈ 1 Myr to ≈ 8 Gyr. A common value of extinction is applied to stars of all ages, and a Calzetti et al. (2009) attenuation law has been adopted ($R_V = 4.05$). To model the emission at observed wavelengths greater than $24 \mu\text{m}$, the SED fitting also includes a component from colder, diffuse dust, most likely heated by star formation processes, as discussed below. This is represented by templates of known starburst galaxies (Vignali et al. 2009). The SED fits are shown in Fig. 3. The four more probable Compton-thick candidates appear to have star-forming components. However, the strength of the star-forming component in PID-66 and PID-147 is ambiguous because of the lack of far-IR data in these sources. The use of templates of nearby starbursts to model the far-IR emission and hence star-formation rates, may present some limitations

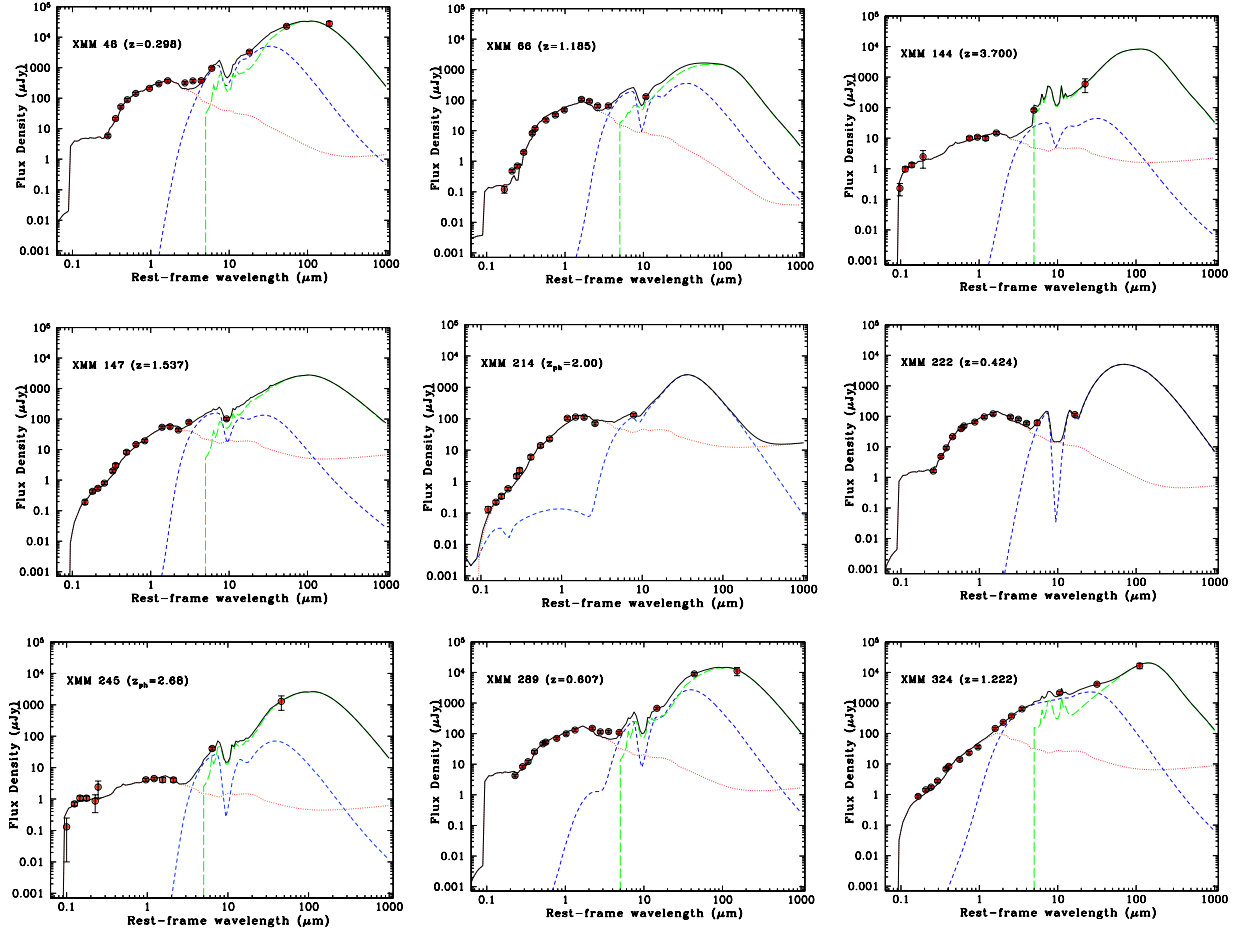


Fig. 3. Spectral energy distributions of the nine possible Compton-thick candidates. The red (dot), blue (short dash), and green (long dash) lines denote the stellar, torus, and starburst component, respectively, while the black line denotes the sum of the three components.

because there may be discrepancies between typical IR SEDs at high redshift compared to local sources (e.g. [Elbaz et al. 2011](#); [Nordon et al. 2012](#)).

Next, we derive the exact star-formation rates and specific star-formation rates, i.e. the ratio of star-formation over the stellar mass. The far-IR luminosity is probably the most reliable tracer of star-forming activity ([Kennicutt & Evans 2012](#)). The IR photons are emitted by the dust surrounding young stars, which is heated by their ultra-violet radiation. The star-formation rate is derived from the total IR luminosity (8–1000 μm) which is ascribed to star-formation according to the SED decomposition. We use the relation between the IR luminosity and SFR in [Murphy et al. \(2011\)](#):

$$SFR[M_{\odot} \text{ yr}^{-1}] = 3.88 \times 10^{-44} L(8-1000 \mu\text{m})[\text{erg s}^{-1}]. \quad (1)$$

Then, the specific star-formation rate, sSFR, is given by

$$\log sSFR[\text{Gyr}^{-1}] = \log SFR[M_{\odot} \text{ yr}^{-1}] - \log M^*[M_{\odot}] + 8.77. \quad (2)$$

The stellar mass M^* is estimated from the optical part of the SED (for details see [Rovilos et al. 2012](#)). Table 5 summarises the IR luminosities, star-formation rate and stellar masses for the heavily obscured AGN in our sample. The typical errors on the 12 μm are about 20% apart from PID-48, PID-66, PID-222, and PID-245 where the uncertainties can be as high as a factor of two. In most cases, the typical errors on the total IR

luminosity are between 10 and 20%. In the cases where no far-IR data are available, the errors become large (factors of 2–3). Finally, for the stellar masses the errors are of the order of 10%.

7.2. X-ray to IR luminosity ratios

The detection of a low X-ray to mid-IR luminosity ratio has been widely used as the main instrument for the detection of faint Compton-thick AGN which cannot be easily identified in X-ray wavelengths (e.g. [Goulding et al. 2011](#)). This is because the mid-IR luminosity (e.g. 12 μm or 6 μm) is a good proxy of the AGN power, as it should be dominated by very hot dust which is heated by the AGN (e.g. [Lutz et al. 2004](#); [Maiolino et al. 2007](#)). At these wavelengths the contribution by the stellar-light and colder dust heated by young stars should be small. [Gandhi et al. \(2009\)](#) present high angular resolution mid-IR (12 μm) observations of the nuclei of 42 nearby Seyfert galaxies. These observations provide the least contaminated core fluxes of AGN. These authors find a tight correlation between the near-IR fluxes and the intrinsic X-ray luminosity. Although the *Spitzer* observations do not have the spatial resolution to resolve the core, the SED decomposition allows us to derive with reasonable accuracy the nuclear IR luminosity. In Fig. 4, we present the obscured X-ray luminosities against the 12 μm luminosities. All four candidate Compton-thick sources have low L_X/L_{12} ratios. Therefore, it appears that the use of the (obscured) X-ray to

Table 5. Infrared properties of heavily obscured sources.

PID (1)	z (2)	L_{12} (3)	L_{8-1000} (4)	AGN frac. (5)	$\log M^*$ (6)	SFR (7)	$sSFR$ (8)
48	0.297	1.66	1.05	0.25	10.51	1.26	-0.48
66	1.185	4.21	1.40	0.22	11.21	1.39	-1.05
144	3.700	14.60	33.7	0.01	10.87	2.77	0.67
147	1.530	7.37	3.33	0.10	10.81	1.76	-0.28
214	2.00	9.5	6.5	0.95	10.52	1.90	-0.99
222	0.424	0.11	– [†]	–	10.64	–	–
245	2.68	17.7	6.6	0.05	10.34	2.05	0.56
289	0.605	1.25	2.0	0.22	10.81	1.43	-0.61
324	1.222	75.3	8.3	0.36	10.84	1.96	-0.11

Notes. The columns are: (1) XMM-ID; (2) redshift; (3) rest-frame $12\ \mu\text{m}$ luminosity in units of solar luminosities ($\times 10^{10}$); (4) total IR luminosity in units of solar luminosities ($\times 10^{11}$); (5) AGN fraction of the total IR luminosity; (6) logarithm of stellar mass in units of solar masses; (7) logarithm of star-formation rate in units of solar masses/yr; (8) specific star-formation rate in units of Gyr^{-1} . ^(†) no photometry above $24\ \mu\text{m}$ rest-frame wavelength.

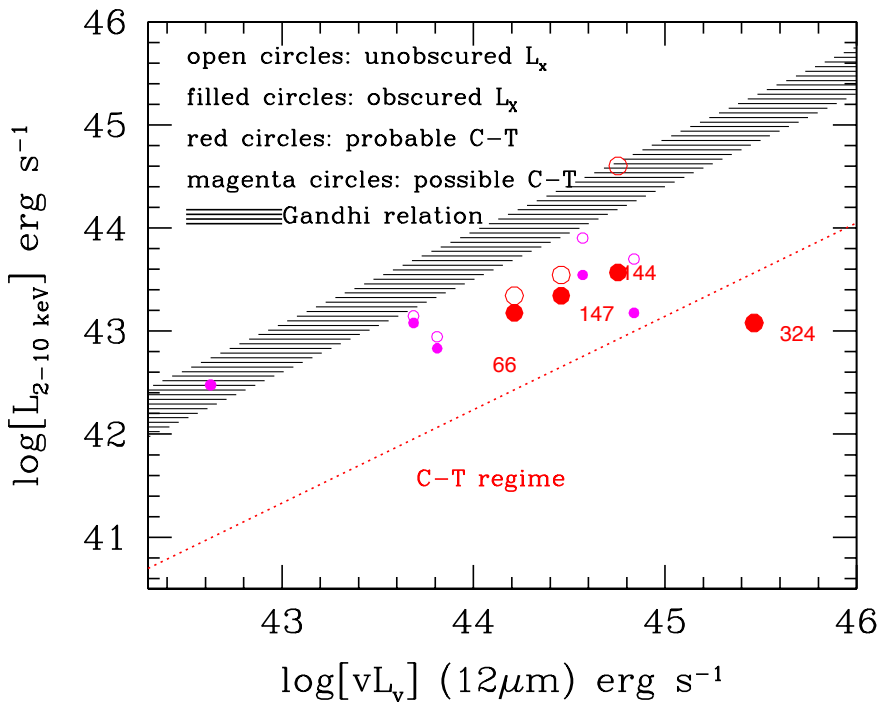


Fig. 4. Absorbed X-ray (2–10 keV) X-ray luminosity against the $12\ \mu\text{m}$ luminosity. The large circles correspond to the best candidate Compton-thick sources as suggested by the large equivalent-width $\text{FeK}\alpha$ lines. The typical errors are of the order of 30% and 20% for the IR and X-ray luminosity respectively, including the uncertainties in the model fitting. The hatched diagram represents the 1σ envelope of the local (Gandhi et al. 2009) relation. Open circles correspond to X-ray luminosities corrected for absorption (see Table 1). For two sources (PID-222 and PID-324) the absorbed luminosity equals the unabsorbed luminosity. The dotted line corresponds to a factor of 30 lower X-ray luminosity as is typical in many Compton-thick nuclei.

mid-IR ($12\ \mu\text{m}$) ratio is a reliable diagnostic for the presence of heavily obscured sources. We note that the unobscured X-ray luminosity of at least two sources lies below the Gandhi et al. (2009) relation. This may suggest that these are Compton-thick despite the absence of high-EW $\text{FeK}\alpha$ lines.

7.3. Star formation

It has been suggested that highly obscured AGN at X-ray wavelengths may be associated with high rates of star formation (see for example Georgakakis et al. 2003; Rovilos et al. 2007; Mainieri et al. 2011). Alexander et al. (2005) find that many sub-mm galaxies, which have very high rates of star-formation, are associated with heavily absorbed sources in X-ray wavelengths. A possible explanation for such a link would be that the nuclear star-forming region is associated with the X-ray absorbing screen. In Fig. 3, it appears that in the four more probable Compton-thick candidates, the rest-frame mid-IR wavelengths (around $6\ \mu\text{m}$) are dominated by the torus emission.

Only two of the four probable Compton-thick candidates have long-wavelength data (PID-144, PID-324), and the star-forming component is dominated in both cases. In Fig. 5 we plot the specific star-formation rate as a function of redshift. The four candidate Compton-thick sources have a specific star-formation which roughly follows the main star-forming sequence as described by Elbaz et al. (2010). Moreover, it appears that the star-formation properties of the Compton-thick AGN are not different from those of X-ray selected AGN in general (see e.g. Mullaney et al. 2011; Santini et al. 2012; Rosario et al. 2012; Rovilos et al. 2012). Therefore, it appears that there is no link between the presence of a Compton-thick nucleus and enhanced star-formation activity in our sample.

8. Discussion

8.1. Limitations in the sample selection and completeness

We compiled a sample of candidate Compton-thick AGN searching for either flat spectrum sources, i.e. those with $\Gamma < 1.4$ (at

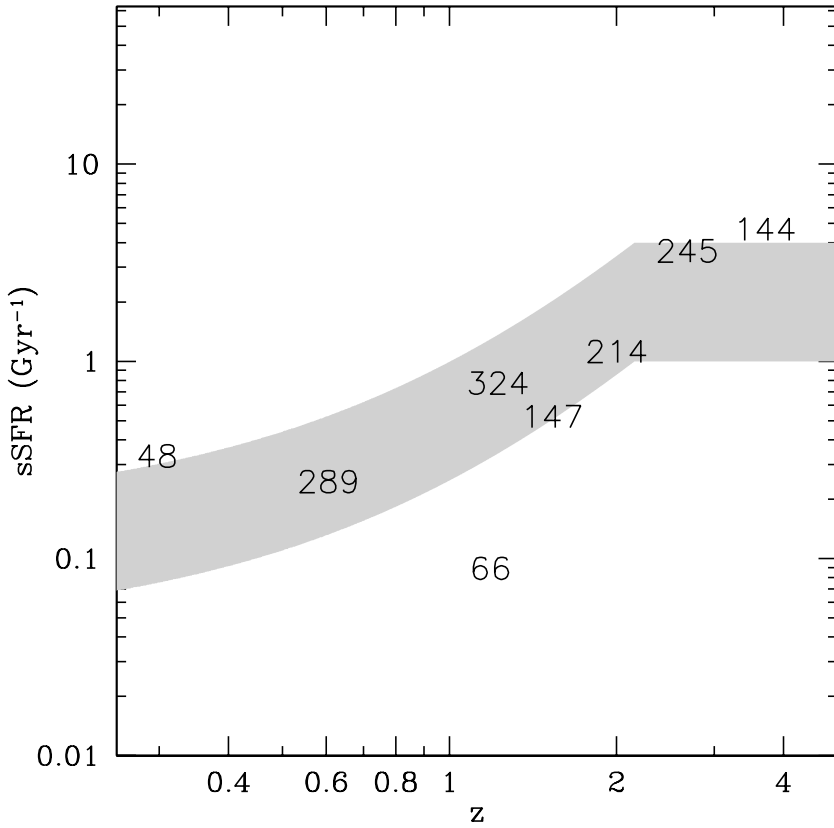


Fig. 5. Specific star-formation rate as a function of redshift for eight of the candidate Compton-thick sources. The shaded area gives the star-formation main-sequence according to Elbaz et al. (2010). Above and below this area lie the starburst and quiescent galaxies respectively. Source 222 is not plotted as there is no available rest-frame photometry above a rest-frame wavelength 24 μm .

the 90% confidence level) which is suggestive of a reflection dominated spectrum (e.g. George & Fabian 1991) or those showing an absorption turnover suggesting a rest-frame column density of $>10^{24} \text{ cm}^{-2}$. The deep flux limits of the present observations facilitates the detection of Compton-thick sources. This is because Compton-thick AGN are difficult to detect because they are very faint in the X-rays for the same intrinsic luminosity, meaning that many Compton-thick sources at a given luminosity will be missed because of the effective survey flux limits.

We find nine possible sources among the 176 *XMM-Newton* spectra examined. Out of these, four show FeK α lines with large equivalent-widths and so these have a higher probability of being Compton-thick. Our sample is by no means complete. For example, at faint fluxes there may be sources which have flat spectra, albeit with larger error bars on Γ and hence fail our selection criterion. Incompleteness may also be introduced by the errors in uncertain redshifts. This is important in the cases where the Compton-thick classification is based on the detection of an absorption turnover.

Next, we discuss whether there are apparently flat X-ray spectrum sources which are not genuinely reflection dominated Compton-thick sources. Most AGN have a steep power-law photon index with a slope of $\Gamma \sim 1.8$ and a dispersion of $\sigma = 0.15$ (e.g. Nandra & Pounds 1994). Sources which have a significantly flatter photon-index have a high probability of being Compton-thick. However, there are flat-spectrum sources which are probably not Compton-thick. This is because there is a degeneracy between the photon-index and the column density and therefore a moderate column density or a complex/multiple absorber can be mistaken as a flat photon index. For example, in Table 1, we see that source PID-66 ($z = 1.185$) shows a photon-index of $\Gamma = -0.37^{+1.2}_{-0.6}$ and $N_{\text{H}} = 12^{+45}_{-11} \text{ cm}^{-2}$

(3015/2498) when both the photon-index and the column density are left free. When the photon-index is fixed to the more realistic value of $\Gamma = 1.8$, the implied column density becomes $N_{\text{H}} \approx 100^{+20}_{-20} \times 10^{22} \text{ cm}^{-2}$, while the difference in the Cash statistic (3018/2500) is not statistically significant. This degeneracy can be seen even in sources with large numbers of photon counts. Corral et al. (2011) present an X-ray spectral analysis of ~ 300 AGN from the *XMM-Newton* bright survey. There are several sources (e.g. XBSJ134656.7+580315 at a redshift of $z = 0.373$), at bright fluxes ($f_{2-10} > 10^{-13} \text{ erg cm}^{-2} \text{ s}^{-1}$) and hence with excellent photon statistics which present a flat power-law as the best-fit. Corral et al. (2011) point out that there are no iron lines with large EW detected in these sources. If the photon-index is fixed at $\Gamma = 1.9$ the resulting column density is of the order $\sim 10^{23} \text{ cm}^{-2}$ and therefore these sources, although certainly heavily obscured, are not Compton-thick.

8.2. The X-ray spectrum of Compton-thick AGN

Additional ambiguities in the selection may be introduced by uncertainties in the X-ray spectrum of Compton-thick AGN. Brightman & Ueda (2012) perform a selection of Compton-thick sources among the *Chandra* sources in the 4 Ms CDF-S data using their own spectral models. These take into account Compton-scattering, the geometry of the circumnuclear matter, and the scattered nuclear light. The amount of scattered light decreases with increasing column density. They find two sources with a large scattering component ($>5\%$) and hence steeper spectra. These amounts of scattered light are well above those detected in local Compton-thick AGN (e.g. Comastri et al. 2010). Evidently, Compton-thick sources with steep spectra would have avoided detection in our selection criterion.

The strength of the FeK α line introduces an additional uncertainty. The presence of an FeK α line with a large EW is considered to be the “smoking gun” for the presence of a Compton-thick nucleus. Comastri et al. (2010) present *Suzaku* observations of a few Compton-thick sources. They find narrow FeK α lines ($EW \sim 1\text{--}2$ keV) due to neutral or mildly ionized gas in all of them. Fukazawa et al. (2011) present *Suzaku* observations of a sample of nearby Seyfert galaxies among which many are Compton-thick. They find that all Compton-thick sources present FeK α lines with an EW exceeding 0.5 keV. However, there have been rare examples of Compton-thick sources with small EW. One of these examples is the Broad-absorption-Line QSO Mrk231. Its *BeppoSAX* spectrum (Braitto et al. 2004) shows that it is Compton-thick (with a column density of $\sim 10^{24}$ cm $^{-2}$), but it has an FeK α line with an EW of only 0.3 keV. Moreover, recent *Suzaku* observations showed a decrease in the covering fraction of the absorber (Piconcelli et al. 2013).

8.3. Previous studies of heavily obscured AGN in the CDF-S

Tozzi et al. (2006) first derived a sample of candidate Compton-thick sources in the 1 Ms CDF-S observations based on X-ray spectral fits. They derived a sample of 20 candidate Compton-thick sources. Georgantopoulos et al. (2007) performed the same exercise compiling a sample of 18 sources in the same dataset but using slightly different spectral models. Only nine of the sources are common in these two samples, demonstrating that the uncertainties in this technique are considerable. From the Compton-thick candidates in Tozzi et al. (2006) or Georgantopoulos et al. (2007), only two sources are found in our present *XMM-Newton* sample.

Comastri et al. (2011) used the 3 Ms *XMM-Newton* data in the CDF-S attempting to confirm that some of the Compton-thick candidates in the above samples are most probably Compton-thick AGN. The excellent quality *XMM-Newton* data and in particular its ability to detect the FeK α line allowed the above authors to confirm the best two examples of Compton-thick candidates in the high redshift Universe, PID-144 and PID-147 at redshifts of $z = 1.53$ and $z = 3.7$ respectively. We note that PID-144 was first reported as Compton-thick by Norman et al. (2002) on the basis of 1 Ms *Chandra* spectroscopy.

For PID-144, Comastri et al. (2011) fit an absorbed power-law model finding a photon-index of $\Gamma = 1.48^{+0.33}_{-0.40}$ with a column density of $6^{+3}_{-2} \times 10^{23}$ cm $^{-2}$ i.e. favouring a transmission-dominated heavily obscured source. Moreover, they detect a strong FeK α line with an EW of 840^{+290}_{-420} eV. Our joint *XMM-Newton/Chandra* spectral fit (Table 2) suggests a transmission-dominated highly obscured spectrum with $N_{\text{H}} \sim 5^{+4}_{-3} \times 10^{23}$ cm $^{-2}$ and a photon index of $\Gamma = 1.26^{+0.72}_{-0.47}$ fully consistent with the results of Comastri et al. (2011). The FeK α line EW is somewhat lower (610^{+430}_{-300} eV) but fully consistent with the above results.

In the case of PID-147, Comastri et al. (2011) find that a good fit to the data is provided by an absorbed power-law model with a column density of $5^{+4}_{-2} \times 10^{22}$ cm $^{-2}$ and a photon index of $\Gamma = -0.11 \pm 0.22$; the iron line has a very large EW (1870^{+410}_{-450} eV). Our combined *XMM-Newton* and *Chandra* spectral fits (Table 2) give a higher column density of $19^{+5}_{-7} \times 10^{22}$ cm $^{-2}$ but with a steeper photon-index $\Gamma \approx 0.46^{+0.45}_{-0.20}$, from which a smaller equivalent width (430^{+200}_{-200} eV). Further exploration of the spectra suggests that the difference can be ascribed to degeneracies in the parameter space, coupled with the different treatment of statistic (c-stat vs. χ^2) and binning of

the spectra, which may result in different local minima for the statistic parameter.

Brightman & Ueda (2012) report 20 Compton-thick AGN. Out of these, five have been reported as Compton-thick in Tozzi et al. (2006) while three in Georgantopoulos et al. (2007). The two Compton-thick sources reported by Comastri et al. (2011) (144 and 147) and in our paper have column densities just below 10^{24} cm $^{-2}$ in the spectral fits of Brightman & Ueda (2012). Recently, Iwasawa et al. (2012a) have performed a search for heavily obscured AGN in the same *XMM-Newton* sample as the one presented here. They are using an X-ray colour-colour diagram based on the rest-frame 3–5 keV, 5–9 keV, and 9–20 keV bands. They find a sample of seven candidate heavily obscured sources at high-redshift ($z > 1.7$) having rest-frame 9–20 keV excess emission. Some of them are good Compton-thick candidates either on the basis of a high-EW (> 1 keV) FeK α line (e.g. PID-114 at $z = 1.806$) or directly on the basis of large column densities ($N_{\text{H}} \approx 10^{24}$ cm $^{-2}$) (PID-245, 252).

8.4. Comparison with X-ray background synthesis models

We compare the number of Compton-thick AGN found here with the predictions of X-ray background synthesis models (e.g. Gilli et al. 2007; Treister et al. 2009a; Ballantyne et al. 2011; Akylas et al. 2012). In our sample, we find four probable candidate Compton-thick sources two of which appear to be transmission-dominated. Comparing with the models of Gilli et al. (2007)², we find that the number of Compton-thick sources is ≈ 7 in our field down to the flux limit of the present survey $f_{(2-10)} \sim 1 \times 10^{-15}$ erg cm $^{-2}$ s $^{-1}$. The model of Treister et al. (2009a)³ predicts a number of 8 Compton-thick in the same area. Finally, the model of Akylas et al. (2012)⁴ yields about 11 Compton-thick sources in our field. All the above estimates refer only to transmission dominated ($\log N_{\text{H}} = 24\text{--}25$) Compton-thick AGN. If we include the reflection-dominated AGN ($\log N_{\text{H}} = 25\text{--}26$) in the model of Gilli et al. (2007), the total number of Compton-thick AGN rises to ≈ 11 . Interestingly, the model of Akylas et al. (2012) has a lower intrinsic fraction of Compton-thick AGN compared to that of Gilli et al. (2007), 15% compared to 33%. However, the higher number of Compton-thick AGN predicted by Akylas et al. (2012) at the relatively bright fluxes probed here, is a consequence of the stronger reflection component predicted by this model. The fact that the number of the Compton-thick candidates found here is systematically lower than those predicted by all X-ray background synthesis models may suggest that our sample suffers from incompleteness.

8.5. Concluding remarks

The selection of Compton-thick AGN on the basis of either an absorption turnover (transmission dominated) or a flat spectrum (reflection dominated) appears to be sufficiently robust. The presence of a high EW FeK α line can be considered as the final diagnostic for the presence of a Compton-thick AGN despite some possible exceptions mentioned above (e.g. Mrk 231). On the basis of the above diagnostic, we isolate four sources as excellent candidates for being Compton-thick. These are probably the best Compton-thick candidates at moderate to high redshifts found so far. Still, the number found here is a factor of at least

² www.bo.astro.it/~gilli/counts.html

³ agn.astroudec.cl

⁴ indra.astro.no.gr

two lower compared to the predictions of X-ray background synthesis models. This may imply that a number of Compton-thick AGN (particularly those at the faintest fluxes) fail to be classified as Compton-thick. It is likely that these lie among our remaining five flat spectrum sources. Then we did not classify them securely as Compton-thick because we failed to detect strong EW FeK α lines. The fact that a few sources lie below the Gandhi et al. (2009) unabsorbed X-ray-to-IR luminosity relation may point towards this scenario. This stresses the need for complementary IR methods together with X-ray spectroscopy, to better understand the properties of Compton-thick AGN.

9. Summary

We report on an X-ray spectral study of the 176 brightest sources in the *XMM-Newton* survey in the CDF-S. The aim is to identify very highly obscured (Compton-thick) AGN. Our methodology consists of looking for sources which have either an absorption cut-off characteristic of a high column density or a flat spectrum (the 90% upper limit of the photon index should be lower than 1.4). After the selection of our candidate sources, we are also looking for the presence of a strong FeK α line which is considered to be the trademark of a highly obscured source. Our results can be briefly summarised as follows:

- The *XMM-Newton* spectra select nine Compton-thick candidates. We separate a group of four sources which have large iron line EW and, therefore, these have higher probability of being Compton-thick. Adding the *Chandra* data to the spectral fits corroborates our previous results. Two of the sources are most likely transmission dominated (PID-66 and PID-144), while the other two are reflection dominated (PID-147 and PID-324).
- Although our sample is by no means statistically complete, it represents the examples of Compton-thick AGN at moderate to high redshifts. In particular, the redshifts of the four most probable candidate Compton-thick sources are $z = 1.185, 1.222, 1.53$ and 3.7 . One of our probable Compton-thick candidates (PID-66) is presented here for the first time. The *XMM-Newton* spectra of two sources (PID-144 and PID-147) have been reported in Comastri et al. (2011) while their combined *XMM/Chandra* spectrum is presented here for the first time. Finally, one source (PID-324) has been reported in detail in Georgantopoulos et al. (2011a).
- The X-ray-to-mid-IR ($12 \mu\text{m}$) luminosity ratio of the four more probable Compton-thick candidates are well below the average relation of Gandhi et al. (2009), independently suggesting heavy obscuration.
- *Spitzer* and *Herschel* observations of our four candidate Compton-thick sources derive star-formation rates between about 25 and $1000 M_{\odot} \text{ yr}^{-1}$. Their specific star-formation rates are consistent with those of normal galaxies suggesting that heavy obscuration is not related to enhanced star-formation.

Acknowledgements. I.G. and A.C. acknowledge the Marie Curie fellowship FP7-PEOPLE-IEF-2008 Prop. 235285. We acknowledge financial contribution from the agreement ASI-INAF I/009/10/0. P.R. acknowledges the receipt of a fellowship (proposal no. P9-3493) from the Greek Secretariat of Research and Technology in the framework of the project “Support to postdoctoral researchers”. N.C. acknowledges financial support from the Della Riccia foundation. F.J.C. acknowledges partial financial support by the Spanish Ministry of Economy and Competitiveness through the grant AYA2010-21490-C02-01. The *Chandra* data used were taken from the *Chandra* Data Archive at the *Chandra* X-ray Center.

References

- Ajello, M., Rau, A., Greiner, J., et al. 2008, *ApJ*, 673, 96
 Akylas, A., & Georgantopoulos, I. 2009, *A&A*, 500, 999
 Akylas, A., Georgakakis, A., Georgantopoulos, I., Brightman, M., & Nandra, K., 2012, *A&A*, 546, A98
 Alexander, D. M., Bauer, F. E., Brandt, W. N., et al. 2003, *AJ*, 126, 539
 Alexander, D. M., Bauer, F. E., Chapman, S. C., et al. 2005, *ApJ*, 632, 736
 Alexander, D. M., Chary, R. R., Pope, A., et al. 2008, *ApJ*, 687, 835
 Alexander, D. M., Bauer, F. E., Brandt, W. N., et al. 2011, *ApJ*, 738, 44
 Arnaud, K. A. 1996, *Astronomical Data Analysis Software and Systems V*, eds. G. Jacoby, & J. Barnes, ASP Conf. Ser., 101, 17
 Balestra, I., Mainieri, V., Popesso, P., et al. 2010, *A&A*, 512, A12
 Ballantyne, D. R., Draper, A. R., Madsen, K. K., Rigby, J. R., & Treister, E., 2011, *ApJ*, 736, 56
 Barger, A., Cowie, L., Capak, P., et al. 2003, *AJ*, 126, 632
 Braitto, V., Della Ceca, R., Piconcelli, E., et al. 2004, *A&A*, 420, 79
 Brandt, W. N., & Hasinger, G. 2005, *ARA&A*, 43, 827
 Brightman, M., & Nandra, K. 2011, *MNRAS*, 413, 1206
 Brightman, M., & Ueda, Y. 2012, *MNRAS*, 423, 702
 Burlon, D., Ajello, M., Greiner, J., et al. 2011, *ApJ*, 728, 58
 Calzetti, D. 2009, *ASPC*, 414, 214
 Cardamone, C. N., van Dokkum, P. G., Urry, C. M., et al. 2010, *ApJS*, 189, 270
 Cash, W. 1979, *ApJ*, 228, 939
 Churazov, E., Sunyaev, R., Revnivtsev, M., et al. 2007, *A&A*, 467, 529
 Comastri, A. 2004, *ASSL*, 308, 245
 Comastri, A., Iwasawa, K., Gilli, R., et al. 2010, *ApJ*, 717, 787
 Comastri, A., Ranalli, P., Iwasawa, K., et al. 2011, *A&A*, 526, L9
 Cooper, M. C., Yan, R., Dickinson, M., et al. 2012, *MNRAS*, 425, 2116
 Corral, A., Della Ceca, R., Caccianiga, A., et al. 2011, *A&A*, 530, A42
 Daddi, E., Alexander, D. M., Dickinson, M., et al. 2007, *ApJ*, 670, 173
 Dadina, M. 2008, *A&A*, 485, 417
 Dahlen, T., Mobasher, B., Dickinson, M., et al. 2010, *ApJ*, 724, 425
 Damen, M., Labbé, I., van Dokkum, P. G., et al. 2011, *ApJ*, 727, 1
 Dickey, J. M., & Lockman, F. J. 1990, *ARA&A*, 28, 215
 Eckart, M. E., McGreer, I. D., Stern, D., Harrison, F. A., & Helfand, D. J. 2010, *ApJ*, 708, 584
 Elbaz, D., Hwang, H. S., Magnelli, B., et al. 2010, *A&A*, 518, L29
 Elbaz, D., Dickinson, M., Hwang, H. S., et al. 2011, *A&A*, 533, A119
 Feltre, A., Hatziminaoglou, E., Fritz, J., & Franceschini 2012, *MNRAS*, 426, 120
 Feruglio, C., Daddi, E., Fiore, F., et al. 2011, *ApJ*, 729, L4
 Fiore, F., Grazian, A., Santini, P., et al. 2008, *ApJ*, 672, 94
 Fiore, F., Puccetti, S., Brusa, M., et al. 2009, *ApJ*, 693, 447
 Fritz, J., Franceschini, A., & Hatziminaoglou, E. 2006, *MNRAS*, 366, 767
 Frontera, F., Orlandini, M., & Landi, R. 2007, *ApJ*, 666, 86
 Fukazawa, Y., Hiragi, K., Mizuno, M., et al. 2011, *ApJ*, 727, 19
 Gandhi, P., Horst, H., Smette, A., et al. 2009, *A&A*, 502, 457
 Georgakakis, A., Hopkins, A. M., Sullivan, M., et al. 2003, *MNRAS*, 345, 939
 Georgantopoulos, I. 2012 [[arXiv:1204.2173](https://arxiv.org/abs/1204.2173)]
 Georgantopoulos, I., Georgakakis, A., & Akylas, A. 2007, *A&A*, 466, 823
 Georgantopoulos, I., Georgakakis, A., Rowan-Robinson, M., & Rovilos, E. 2008, *A&A*, 484, 671
 Georgantopoulos, I., Akylas, A., Georgakakis, A., & Rowan-Robinson, M. 2009, *A&A*, 507, 747
 Georgantopoulos, I., Dasyra, K., Rovilos, E., et al. 2011a, *A&A*, 531, A116
 Georgantopoulos, I., Rovilos, E., Xilouris, E. M., Comastri, A., & Akylas, A. 2011b, *A&A*, 526, A86
 George, I., & Fabian, A. C. 1991, *MNRAS*, 249, 352
 Giacomini, R., Gursky, H., Paolini, F. R., & Rossi, B. B. 1962, *Phys. Rev. Lett.*, 9, 439
 Giacomini, R., Zirm, A., Wang, J., et al. 2002, *ApJS*, 139, 369
 Gilli, R., Comastri, A., & Hasinger, G. 2007, *A&A*, 463, 79
 Gilli, R., Vignali, C., Mignoli, M., et al. 2010, *A&A*, 519, A92
 Gilli, R., Su, J., Norman, C., et al. 2011, *ApJ*, 730, L28
 Goulding, A. D., Alexander, D. M., Mullaney, J. R., et al. 2011, *MNRAS*, 411, 1231
 Goulding, A. D., Alexander, D. M., Bauer, F. E., et al. 2012, *ApJ*, 755, 5
 Hatziminaoglou, E., Fritz, J., & Jarrett, T. H. 2009, *MNRAS*, 399, 1206
 Iwasawa, K., Crawford, C. S., Fabian, A. C., & Wilman, R. J. 2005, *MNRAS*, 326, L20
 Iwasawa, K., Sanders, D. B., Evans, A. S., et al. 2009, *ApJ*, 695, L103
 Iwasawa, K., Gilli, R., Vignali, C., et al. 2012a, *A&A*, 546, A84
 Iwasawa, K., Mainieri, V., Brusa, M., et al. 2012b, *A&A*, 537, A86
 Kennicutt, R. C., & Evans, N. J., 2012, *ARA&A*, 50, 531
 Le Fèvre, O., Vettolani, G., Garilli, B., et al. 2005, *A&A*, 439, 845
 Lehmer, B. D., Brandt, W. N., Alexander, D. M., et al. 2005, *ApJS*, 161, 21
 Luo, B., Bauer, F. E., Brandt, W. N., et al. 2008, *ApJS*, 179, 19

- Luo, B., Brandt, W. N., Xue, Y. Q., et al. 2010, *ApJS*, 187, 560
- Lutz, D., Maiolino, R., Spoon, H. W. W., & Moorwood, A. F. M. 2004, *A&A*, 418, 465
- Magdziarz, P. A., & Zdziarski, A. 1995, *MNRAS*, 273, 837
- Magnelli, B., Elbaz, D., Chary, R. R., et al. 2009, *A&A*, 496, 57
- Mainieri, V., Bongiorno, A., Merloni, A., et al. 2011, *A&A*, 535, A80
- Maiolino, R., Shemmer, O., Imanishi, M., et al. 2007, *A&A*, 468, 979
- Malizia, A., Bassani, L., Bazzano, A., et al. 2012, *MNRAS*, 426, 1750
- Marconi, A., Risaliti, G., Gilli, R., et al. 2004, *MNRAS*, 351, 169
- Matt, G., Bianchi, S., Guainazzi, M., & Molendi, S. 2004, *A&A*, 414, 155
- Merloni, A., & Heinz, S. 2008, *MNRAS*, 388, 1011
- Moretti, A., Pagani, C., Cusumano, G., et al. 2009, *A&A*, 493, 501
- Moretti, A., Vattakunnel, S., Tozzi, P., et al. 2012, *A&A*, 548, A87
- Mullaney, J. R., Alexander, D. M., Goulding, A. D., & Hickox, R. C. 2011, *MNRAS*, 414, 1082
- Murphy, E. J., Condon, J. J., & Schinnerer, E. 2011, *ApJ*, 737, 67
- Nandra, K. & Pounds, K. A., 1994, *MNRAS*, 268, 405
- Nordon, R., Lutz, D., Genzel, R., et al. 2012, *A&A*, 745, A182
- Norman, C., Hasinger, G., Giacconi, R., et al. 2002, *ApJ*, 571, 218
- Norris, R. P., Afonso, J., Appleton, P. N., et al. 2006, *AJ*, 132, 2409
- Oliver, S., Bock, J., Altieri, B., et al. 2012, *MNRAS*, 424, 1614
- Paltani, S., Walter, R., McHardy, I. M., et al. 2008, *A&A*, 485, 707
- Piconcelli, E., Miniutti, G., Ranalli, P., et al. 2013, *MNRAS*, 428, 1185
- Pozzi, F., Vignali, C., Gruppioni, C., et al. 2012, *MNRAS*, 423, 1909
- Rafferty, D. A., Brandt, W. N., Alexander, D. M., et al. 2011, *ApJ*, 742, 3
- Ranalli, P., Comastri, A., Vignali, C., et al. 2013, *A&A*, 555, A42
- Ravikumar, C. D., Puech, M., Flores, H., et al. 2007, *A&A*, 465, 1099
- Ricci, C., Walter, R., Courvoisier, T. J.-L., & Paltani, S. 2011, *A&A*, 532, A102
- Rosario, D. J., Santini, P., Lutz, D., et al. 2012, *A&A*, 545, A45
- Rovilos, E., Georgakakis, A., Georgantopoulos, I., et al. 2007, *A&A*, 466, 119
- Rovilos, E., Comastri, A., Gilli, R., et al. 2012, *A&A*, 546, A58
- Santini, P., Fontana, A., Grazian, A., et al. 2009, *A&A*, 504, 751
- Santini, P., Rosario, D. J., Shao, L., et al. 2012, *A&A*, 540, A109
- Sazonov, S., Krivonos, R., Revnivtsev, M., Churazov, E., & Sunyaev, R. 2008, *A&A*, 482, 517
- Silverman, J. D., Mainieri, V., Salvato, M., et al. 2010, *ApJS*, 191, 124
- Shu, X. W., Yaqoob, T., & Wang, J. X. 2011, *ApJ*, 738, 147
- Soltan, A. 1982, *MNRAS*, 200, 115
- Szokoly, G. P., Bergeron, J., Hasinger, G., et al. 2004, *ApJS*, 155, 271
- Taylor, E. N., Franx, M., van Dokkum, P. G., et al. 2009, *ApJS*, 183, 295
- Tozzi, P., Gilli, R., Mainieri, V., et al. 2006, *A&A*, 451, 457
- Treister, E., Urry, C. M., & Virani, S. 2009a, *ApJ*, 696, 110
- Treister, E., Cardamone, C. N., Schawinski, K., et al. 2009b, *ApJ*, 706, 535
- Tueller, J., Mushotzky, R. F., Barthelmy, S., et al. 2008, *ApJ*, 681, 113
- Turner, J. T., George, I. M., Nandra, K., & Mushotzky, R. F. 1997, *ApJ*, 488, 164
- Vanzella, E., Cristiani, S., Dickinson, M., et al. 2008, *A&A*, 478, 83
- Vignali, C., Pozzi, F., Fritz, J., et al. 2009, *A&A*, 395, 2189
- Winter, L. M., Mushotzky, R. F., Reynolds, C. S., & Tueller, J. 2009, *ApJ*, 690, 1322
- Worsley, M. A., Fabian, A. C., Bauer, F. E., et al. 2005, *MNRAS*, 357, 1281
- Worsley, M. A., Fabian, A. C., Pooley, G. G., & Chandler, C. J. 2006, *MNRAS*, 368, 844
- Xue, Y. Q., Luo, B., Brandt, W. N., et al. 2011, *ApJS*, 195, 10
- Xue, Y. Q., Wang, S. X., Brandt, W. N., et al. 2012, *ApJ*, 758, 129
- Yaqoob, T. 1997, *ApJ*, 479, 184